

DocuPrint C3055DX Colour Printer

The ultimate in compact design
and affordability



DocuPrint C3055DX Colour Printer

Small footprint, Big capabilities. The DocuPrint C3055DX packs a lot of features into a very small package. It's the world's smallest A3 size mono printer replacement – that also prints in colour. Its versatility makes it perfect for small to medium workgroups that demand performance, flexibility and professional print quality.

Performance and versatility – in one compact design

Flexible and fast, the DocuPrint C3055DX delivers an impressive A4 black and white print speed of 35 ppm with a quick first print out time of just 11 seconds. Faster print speeds means less waiting time and more efficiency.

• Fast mono, plus A3 size colour prints

In addition to delivering impressive mono print speed, the DocuPrint C3055DX gives you the ability to print A3 size, for newsletters or big Excel worksheets, with the added bonus of delivering crisp full-colour prints.

• Print everything in-house

Now everything you need can be printed on one single, small-size printer. From postcard size up to A3 size, 60 gsm up to 216 gsm, black and white to colour - you can print everything in-house, saving time and money.

Uncompromising quality

• Advanced multi-level screen technology

Fuji Xerox unique multi-level screen technology automatically switches between the image processing methods for different objects such as photos, texts, and graphics in a document, producing optimal quality printing.

• Unique NIE technology corrects improperly colour-balanced images

NIE (Natural Image Enhancement) technology automatically corrects the contrast and colour balance of poorly balanced images such as digital photos before printing.

• Advanced colour correction by 3D-ACM

Fuji Xerox advanced colour correction technology 3D-ACM ensures that various types of documents (text, photos, presentations, and Web pages) reproduce with optimum quality.

Value-packed features right out-of-the-box

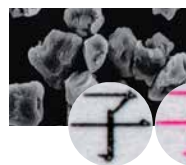
The DocuPrint C3055DX boasts a range of features that deliver even more value. With automatic duplex, you'll save paper and produce professional looking double-sided documents. With the network interface you can share the printer with your colleagues in the office and with Adobe PostScript 3 you can print from any environment – and it's all standard 'right out-of-the-box'.

• Less waste

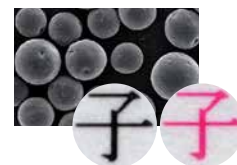
Proven Fuji Xerox "elasticity belt/lap transfer technology" and "EA toner" means perfect registration and transfer of toner to the paper. Not only does this deliver superb print quality, but it ensures that over 98% of toner is used for printing and that means less waste and less machine contamination from floating toner particles – it all adds up to greater reliability.



Conventional Toner particles



EA Toner particles



Fuji Xerox "elasticity belt/lap transfer technology" and "EA toner" means perfect registration and transfer of toner to the paper.



NIE technology automatically corrects dark, improperly balanced images for optimum output quality.

DocuPrint C3055DX Quick Facts

- Print up to 35 ppm
- 600 dpi Print resolution (upto 9600 x 600 dpi with image enhancement)
- 350 MHz processor
- 65,000 pages/month duty cycle
- 405 sheet capacity, expandable to 2,055 sheets

• Print

• A3

• 35 ppm A4 mono, 8ppm colour

WxDxH:
499 x 534 x 407 mm



Take control

The DocuPrint C3055DX comes with powerful software that enables you to take control of your workflow.

- **Easier system administration**

When the printer is installed in a TCP/IP environment, CentreWare Internet Services lets you check the printer status and configure settings using a web browser on a network computer – you can even get updates on the printer status via e-mail.

- **Control usage and control costs**

Auditron Printer Monitor can be used to control usage, for example setting limits on print volume and colour printing, which can help control your costs.

Flexible and reliable paper handling

- 1 The 155-sheet bypass tray (standard) for a wide variety of media up to 216 gsm and A3 size.
- 2 The 250-sheet tray 2 (standard) for media up to 216gsm and A3 size.
- 3 4 5 Add up to three 550-sheet trays for media up to 216gsm and A3 size.
- 6 250-sheet output tray.4



DocuPrint C3055DX shown with optional DocuScan C4250 scanner, stand and cabinet.

DocuPrint C3055DX Printer Configuration

- Bypass tray: 155 sheets, Tray 1: 250 sheets
- Duplex standard
- Ethernet, USB and Parallel connectivity

- Options**
- Hard drive kit
 - 550-sheet feeder
 - Network expansion card
 - Memory upgrade
 - DocuScan C4250 scanner
 - Cabinet
 - Castor

Specifications of DocuPrint C3055DX

Print Function

Print speed	35 ppm monochrome and 8 ppm colour A4 size
First page out	11 sec. monochrome and 22 sec. colour
Memory (std./max.)	256/640 MB RAM
Processor	350 MHz
PDL	PCL6/ PCL5e/ Adobe PostScript 3 FX-PDF ESC/P
Monthly print volume	65,000 pages
Print resolution	600 dpi (9600 x 600 image enhancement)
Connectivity	Ethernet 10/100Base-TX, Parallel IEEE1284 , USB 2.0
Duplex printing	Standard
Media input capacity	Bypass tray: 155 sheets, Tray 1: 250 sheets
Maximum input capacity	2055 sheets
Media output capacity	550-sheet standard tray face down
Colour printing access control	Yes (Auditron Standard)
Maximum printing access control	Yes (Auditron Standard)
Internal Hard Disk Drive	Yes (optional)
Device Management	Yes (standard - Embedded Web Server, Remote Printing, Email Alerts)
Dimensions (W x D x H)	499.5mm x 534.0mm x 407.0mm
Weight	41.6 kg (CRUs included)
Noise level	Standby mode: Silence (no fan) Operating mode (LpAm) : 54dB
Electrical Consumption	Standby mode 1: <27Wh (220V - 240V) Standby mode 2: <5W (220V - 240V) Maximum with Options: <1010W (220V - 240V)
Warranty	One year on-site warranty

Consumables

Black toner cartridge (up to 6,500 pages)	CT200805
Cyan toner cartridge (up to 6,500 pages)	CT200806
Magenta toner cartridge (up to 6,500 pages)	CT200807
Yellow toner cartridge (up to 6,500 pages)	CT200808
Drum Cartridge	CT350445
(up to 28,000 monochrome or 14,000 colour pages)	
Maintenance kit 220 V (up to 100,000 pages)	CWAA0679

Accessories

550 sheet feeders (maximum of 3 can be added)	EL300588
Cabinet	EL300590
Castor (required when 2 or 3 extra 550 sheet feeders are added)	EL300591
DocuScan C4250 Scanner	DSC4250@-A
Network Expansion Card	EL300587
Internal Hard Disk	EL300586
512 MB Memory	EL300452

Approximate capacity for 5 % coverage on A4 size paper

Machine is delivered with 3,000 pages of each toner cartridge



Descriptions in this material, product specifications and/or appearances are subject to change without prior notice due to improvements. Please note that the product colour appears differently from the actual colour as a result of properties of papers or printing ink. Windows and Windows NT are registered trademarks of Microsoft Corporation. Macintosh and Mac OS are trademarks of Apple Computer, Inc. HP-GL is a registered trademark of Hewlett-Packard Company. Other company names or product names are registered trademarks or trademarks of each company.

⚠ For Your Safe Use

Before using the product, read the Instruction Manual carefully for proper use.
Use the product with an appropriate adequate power source and voltage displayed. Be sure to establish a ground. In the case of a failure or short circuit, an electric shock may result.

Reproduction Prohibitions Please note that reproduction of the following is prohibited by law. Domestic and overseas bank notes and coins, government-issued securities, national bonds and local bond certificates. Unused postage stamps and post cards. Certificate stamps stipulated by law. The reproduction of works for copyright purposes (literary works, musical works, paintings, engravings, maps, cinematographic works, photographic works, etc.) is prohibited except when they are reproduced personally, at home or within limited range according to the above. This product is equipped with an anti-counterfeit feature. This feature is not intended to prevent illegal reproduction. Be extremely careful about the management of equipment used.

For more information or for your nearest authorised Fuji Xerox printer reseller, visit our website or call:

Fuji Xerox Asia Pacific
14a Rodborough Road Frenchs Forest NSW 2086

Australia 1300 793 769
New Zealand 0800 993 769

www.fujixeroxprinters.com.au
www.fujixeroxprinters.co.nz

