

## Single-Monitor Arm - Laptop Stand - One-Touch Height Adjustment

StarTech ID: ARMUNONB

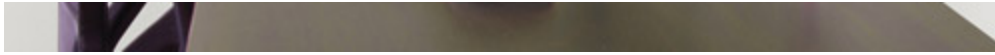


This monitor arm lets you create a convenient and cost-effective dual-monitor workspace, using your laptop as your secondary display. It features an integrated stand that elevates your laptop off of your desk, seamlessly aligning it with your other display.

### Create a dual-monitor setup, using your laptop as a second display

Integrate your laptop display to provide enhanced productivity. The tray lets you adjust the height of your laptop, so that it's in line with your monitor, giving you the same functionality as a dual-monitor setup without having to purchase a second monitor.





With two displays you have the extra screen space that you need to simplify multitasking and maximize productivity. Using two displays makes it easier to reference material on one monitor while working on the other, saving you the time and hassle of having to flip back and forth between documents. Plus, for viewing longer pages or blocks of code without having to scroll down your screen, the LCD arm also supports simple landscape-to-portrait display rotation.

## Create an ergonomic dual-display environment

The flexible monitor arm and stand let you extend, tilt, and swivel the monitor and the laptop with a full range of motion across multiple axes, with spring-assisted height adjustments for effortless positioning. It makes it easy to create an ergonomic work environment that's tailored to your specific needs.

## Free up some desk space

The versatile arm lets you elevate your laptop and traditional monitor stand off of your desk. This gives you more surface area for additional hardware or for completing physical tasks such as drafting or reading paper documents.

The monitor arm is perfect for smaller work environments, like cubicles, providing everything you need while using less space.

Also, by combining the arm with a monitor, laptop, docking station, keyboard and mouse, you can comfortably set yourself up at a hot desk in the office, and easily recreate the same setup at home. It's perfect for business travelers and users who are constantly on the go.

The monitor arm supports a display of 15 to 27" up to a maximum weight capacity of 17.6 lb. (8 kg) and features cable management clips to help keep things neat. The integrated laptop stand also supports a weight capacity of 17.6 lb. (8 kg) and offers its own integrated cable management clips.

The StarTech.com ARMUNONB monitor arm is backed by a StarTech.com 2-year warranty and free, lifetime technical support.

## Applications

- Mount a display and a laptop to the edge of your desk or table with a wide range of adjustment capability
- Integrate your laptop display with your monitor and create a dual-monitor work environment
- Elevate your display and your laptop higher above your desk surface, for ideal viewing angles
- Rotate your monitor to portrait orientation for web design and coding

## Features

- Optimize your desk space by raising your monitor and laptop off of your desk
- Replicate a dual-monitor setup by integrating your laptop as a second display
- Work more comfortably, with hassle-free display adjustments
- Supports a 15 to 27" monitor (17.6 lb. / 8 kg capacity)
- Supports a laptop of up to 17.6 lb. (8 kg)

**Technical Specifications**

Warranty	2 Years
# of displays supported	1
Mounting Options	Desk Clamp
One-touch height adjustment	Yes
VESA Hole Pattern(s)	75x75 mm
VESA Hole Pattern(s)	100x100 mm
Wallmountable	No
Display Rotation	360°
Laptop Arm Extension	15 in [381 mm]
Laptop Tray Tilt	90° tilt from horizontal to vertical
Maximum Arm Extension	22 in [558.7 mm]
Maximum Display Size	27in
Minimum Display Size	15in
Mounting Surface Thickness	90 mm (3.54 in.)
Swivel / Pivot	180° at the display
Tilt	-90° / +85°
Weight Capacity	17.6 lb [8 kg]

**Note** The maximum extension of the laptop tray arm is measured from the pole to the center of the tray.

Color	Black
Enclosure Type	Aluminum
Laptop Tray Height	9.4 in [240 mm]
Laptop Tray Width	12.6 in [320 mm]
Product Weight	10.9 lb [4.9 kg]
Shipping (Package) Weight	13.5 lb [6.1 kg]
Included in Package	1 - swivel arm
Included in Package	1 - extension arm
Included in Package	1 - laptop tray
Included in Package	1 - spring arm
Included in Package	1 - pole and clamp
Included in Package	4 - M4x12 screws

Included in Package	4 - M4x30 screws
Included in Package	4 - M5x12 screws
Included in Package	1 - M6x25 screw
Included in Package	4 - M5 nuts
Included in Package	1 - M3 Allen key
Included in Package	1 - M5 Allen key
Included in Package	4 - spacers
Included in Package	1 - height-adjustment ring
Included in Package	1 - cable management clip (pole)
Included in Package	2 - cable management clip (laptop arm)
Included in Package	4 - rubber pads
Included in Package	1 - plastic cap
Included in Package	1 - instruction manual

#### Certifications, Reports and Compatibility

